

Organized by :



**Book of Abstract Conference Proceeding**

# 2<sup>nd</sup> ICP-IBS

<https://icpibs.com>

**The 2nd International Conference  
on Psychology and Interdisciplinary  
Behavioral Studies**

Theme: " With ICT, Is Psychology Still Growing?"

**Virtual International Conference :**

**12-13 November 2024**

# **Book of Abstract Conference Proceeding**

## **2<sup>nd</sup> International Conference on Psychology and Interdisciplinary Behavioral Studies (2<sup>nd</sup> ICP-IBS)**

Theme: “With ICT, Is Psychology Still Growing?”

**Virtual Conference  
November 12 - 13, 2024**



**Book of Abstract Conference Proceeding**  
**2<sup>nd</sup> International Conference on Psychology and Interdisciplinary**  
**Behavioral Studies (2<sup>nd</sup> ICP-IBS)**

Theme: ““With ICT, Is Psychology Still Growing?””

**Editorial Board:**

Dr. Ayu Dwi Nindyati, M.Si., Psikolog.

Dr. Hendrati Dwi Mulyaningsih

Santi Rahmawati, MSM.

**Cover and layout:**

Finna Zephyrine

Mochammad Rizal

Donny Maulana Jefrianto

**Publisher:**

Yayasan Sinergi Riset dan Edukasi

**Office Address:**

Komplek Sinergi Antapani

Jl. Nyaman 31, RT01 RW23, Bandung 40291, Indonesia

Contact: (+62) 811227479 / (+62) 8112331733

Email: [contact@researchsynergy.org](mailto:contact@researchsynergy.org)

First publication, November 2024

Copyright © 2024 by Yayasan Sinergi Riset dan Edukasi.

*This book is only published once as a part of the specific international conference.*

All rights reserved. No part of this publication may be reproduced or utilized in any form or by any means, electronic or mechanical, including photocopying, recording or by any information storage and retrieval system, without permission in writing from the publisher.

# FOREWORD

Supported by :



The Psychology Study Program of Universitas Pancasila was opened in 2006. The establishment of this faculty was initiated by Prof. Dr. Edie Toet Hendratno, SH., M.Si, FCBArb. as the Rector of Universitas Pancasila at that time, Dr. Silverius Y. Soeharso, SE., MM., Psi who at that time was the Dean of the Faculty of Psychology at Universitas Pancasila and Prof. Dr. Sarlito W. Sarwono as a professor of Psychology. The establishment of the Psychology Study Program was a response to the community's need for quality psychology professional services that meet national and international standards in strengthening its role in the industrial, government, community, and education sectors in Indonesia. The Faculty of Psychology at Universitas Pancasila was established on June 7, 2006 with the Decree of Operational Permit no. 1884/D/T/2006 dated June 7, 2006 and is under the auspices of the Universitas Pancasila Education Foundation. Based on the decision of BAN-PT No. 4616/SK/BAN-PT/Akred/S/XI/2019 November 2019, currently the Psychology Study Program is accredited with an "A" rating

The Faculty of Psychology of Universitas Pancasila is a psychology faculty that integrates 5 pillars of psychology science in its curriculum. The 5 pillars of science include Social and Cultural Psychology, Industrial Organizational and Business Psychology, Developmental and Clinical Psychology, Educational and School Psychology, Psychometrics and Psychological Measurement. In addition to being educated to understand basic human nature, students are also educated on how the psychology science and competencies that have been studied can contribute to human welfare.

#### **VISION:**

The vision of the Faculty of Psychology, Universitas Pancasila is **"To become an excellent and leading Faculty of Psychology based on Pancasila values with distinctive characteristics in Business Psychology"**.

#### **MISSION:**

To achieve the vision above, the steps are detailed in the following mission:

1. Organizing a higher education process in psychology that is oriented towards Business Psychology based on the formulation of KKNI, SNPT and SKKNI
2. Conducting psychological research that meets international standards and is oriented towards Business Psychology
3. Carrying out community service activities in the field of psychology that are oriented towards Business Psychology
4. Cooperating with parties related to the implementation of the Merdeka Belajar-Kampus Merdeka policy concept
5. Building a systematic and information technology system to improve the quality of academic and non-academic services as well as good faculty governance
6. Organizing work programs that are oriented towards improving the welfare of Teaching Staff and Education Personnel.

<https://psikologi.univpancasila.ac.id/>



**Research Synergy Foundation** is a digital social enterprise platform that focuses on developing the Global Research Ecosystem towards outstanding global scholars. We build collaborative networks among researchers, lecturers, scholars, and practitioners globally for the realization of knowledge acceleration and to contribute more to society and humanity. As a social enterprise, our aim is to provide a good research ecosystem and platform for researchers to share, discuss, and disseminate their ideas. In addition, it helps you to improve your research and contribute to the knowledge. Therefore, creating social value and impact is our priority.

From 2017 to 2023, more than 30.000 scholars have participated in our programs from Asia, Australia, Africa, America, and Europe continents. With the average of the increasing number of members by more than 5.000 each year, we continuously strengthen the global research ecosystem by having five support systems that are ready to help members from across the world.

There are various agendas (work and program) that we have already done since 2017 up to present. The agendas are coming from all the support systems in the Global Research Ecosystem, named: Scholarvein, ReviewerTrack, Research Synergy Institute, Research Synergy Press, and Global Research Community. Research and publication cannot be seen as a separate part. Otherwise, we should take both as a comprehensive program. Moreover, the quality of the paper is the biggest concern for publication. To achieve the Organization/University/ Institution goal, we provide some agendas that can support you in research and publication enhancement. Some of the prominent agendas are:

- a. International Conferences: It aims to create a "tipping point" of opportunities for participants to disseminate their research globally and have reputable scientific publication output.
- b. Scientific and Academic Writing Coaching Clinics: It aims to provide a targeted and intensive learning strategy for publishing papers in high-impact Scopus/ WOS international journals.
- c. Workshops: It aims to provide a vibrant learning forum to enhance the author's capability of scientific writing skills and the manuscript's quality.
- d. Learning and Knowledge Sharing Programs: It aims to provide the best practice and guide from the experts, editors, and publishers' perspectives in research and publication enhancement.
- e. Social Programs: It aims to empower and encourage society to share the value of creating an impactful program with us.

Research Synergy Foundation welcome all individuals, organizations/institutions (universities, governments, and private sectors) to be part of our Global Research Ecosystem.

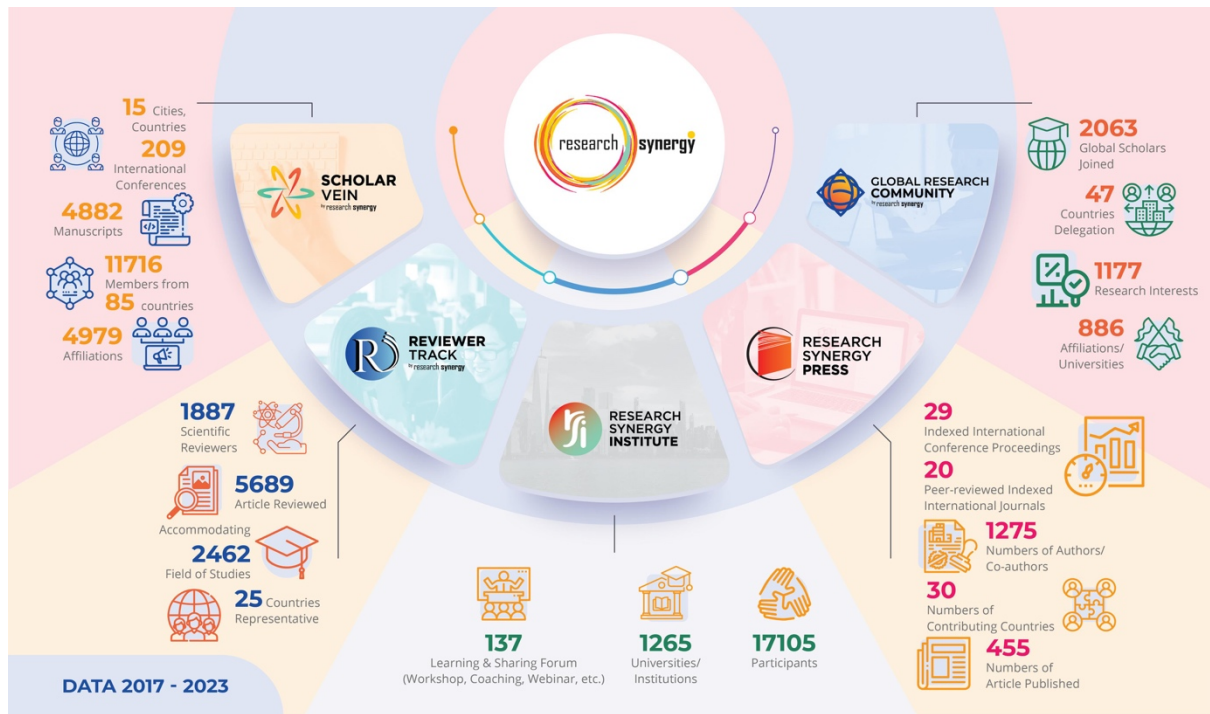


Figure: Global Research Ecosystem owned by Research Synergy Foundation (data from 2017 – 2023)

Please find other important links related to RSF profile:

- <https://www.researchsynergy.org/>
- <http://globalresearchecosystem.com/>
- <https://f1000research.com/rsf>
- <https://journals.researchsynergypress.com>
- <https://proceeding.researchsynergypress.com>
- <https://www.researchsynergysystem.com>
- <https://www.facebook.com/ResearchSynergy/>
- <https://www.instagram.com/researchsynergyfoundation/>
- <https://www.youtube.com/@researchsynergyfoundation8675>

# TABLE OF CONTENTS

<b>TABLE OF CONTENTS</b> .....	<b>6</b>
<b>ORGANIZING COMMITTEE</b> .....	<b>8</b>
<b>SCIENTIFIC REVIEWER COMMITTEE</b> .....	<b>10</b>
<b>CONFERENCE CHAIR MESSAGE</b> .....	<b>11</b>
<b>CONFERENCE CHAIR</b> .....	<b>12</b>
<b>CO-CONFERENCE CHAIR</b> .....	<b>13</b>
<b>CONFERENCE CHAIR</b> .....	<b>14</b>
<b>OPENING SPEAKER</b> .....	<b>15</b>
<b>CLOSING SPEAKER</b> .....	<b>16</b>
<b>KEYNOTE SPEAKERS</b> .....	<b>17</b>
<b>MASTER OF CEREMONY</b> .....	<b>23</b>
<b>SESSION CHAIRS</b> .....	<b>24</b>
<b>MODERATORS</b> .....	<b>26</b>
<b>CONFERENCE PROGRAM</b> .....	<b>28</b>
<b>CONFERENCE PROGRAM</b> .....	<b>29</b>
<b>LIST OF PRESENTERS</b> .....	<b>30</b>
<b>LIST OF PRESENTERS</b> .....	<b>31</b>
<b>Track: I/O Psychology and Business Psychology</b> .....	<b>33</b>
The Relationship Between Proactive Personality and Career Growth Among Working Students   Zuana Prasetya Perdana Nugraha <sup>1</sup> , Evanytha <sup>2</sup> , Farida Aini <sup>3</sup> .....	<b>34</b>
The Role of Self-Efficacy and Locus of Control on Work Readiness Among Gen Z   Ayu Nindyati <sup>1</sup> , Rizqi Awalia Fatimah Elzahra <sup>2</sup> , Rivaldi Izza Rahmadhani <sup>3</sup> .....	<b>35</b>
The Effect of Resilience and Social Support on the Level of Life Satisfaction of Gen Z Jakarta   Dian Firly <sup>1</sup> , Ayu Dwi Nindyati <sup>2</sup> , Seta Ariawuri Wicaksana <sup>3</sup> .....	<b>36</b>
Keys Factors Influencing Employee Performance in the Indonesian Automotive Component Sector: A Delphi Study   Endro Puspo Wiroko .....	<b>37</b>
<b>Track: Social and Cultural Psychology</b> .....	<b>38</b>
The Role of Moral Disengagement in Cyberbullying Bystander (Cyber-Bystander) Behaviour on Instagram among Late Adolescents   Cindy Febriani Thalia <sup>1</sup> , Aisyah Syihab <sup>2</sup> , Muhammad Akhyar <sup>3</sup> .....	<b>39</b>
Overview of Coping Strategies for Caregivers of Elderly Individuals with Dementia at Senior Care Darmawan Park Sentul   Kern Ismed <sup>1</sup> , Maharani Ardi Putri <sup>2</sup> , Ni Made Rai Kistyanti <sup>3</sup> .....	<b>40</b>
The Role of Narcissism on Problematic Social Media Use In Emerging Adulthood Instagram Users   Dela Meiriza Usman <sup>1</sup> , Aisyah Syihab <sup>2</sup> , Andri Setia Dharma <sup>3</sup> .....	<b>41</b>
<b>Track: Developmental and Clinical Psychology</b> .....	<b>42</b>



The Effect of Social Support on Existential Gratitude in People Living with HIV (PLWH) in DKI Jakarta Province   Edi Iskandar <sup>1</sup> , Dearly <sup>2</sup> .....	43
Family Caregiver Experiences of Terminal Cancer Caregiving Trajectory: A Qualitative Study in Palliative Care Setting   Masoud Rezaei .....	44
<b>Track: Educational Psychology</b> .....	45
Construct Validity of The Moral Reasoning Scale For Adolescents Model I (MRSA-M1)   Awaluddin Tjalla.....	46
Development of Evaluation Instruments for Acceleration of Stunting Reduction Programs in Specific Interventions   Awaluddin Tjalla <sup>1</sup> , Helvy Yunida <sup>2</sup> .....	47
Exploration of the Impact of Board Games on Internet Addiction and Screen Time Management: A Case Study of Family Link App Usage in Generation Alpha   Salindri Anita Rahman .....	48
Fostering Student Happiness in Learning During the Covid-19 Pandemic: A Phenomenological Study in Elementary School   Wresti Wrediningsih <sup>1</sup> , Ade Wira Sanjaya <sup>2</sup> .....	49
Relationship Between School Climate and Teacher Job Satisfaction: A Meta-Analytic Study   Lisa Dwi Ningtyas.....	50
<b>Track: Environmental and Green Psychology</b> .....	52
The Role of Social Acceptance as a Mediator Variable in the Influence of Environmental Awareness on Willingness to Pay for Waste to Energy   Silverius Y. Soeharso <sup>1</sup> , Seta A. Wicaksana <sup>2</sup> .....	52
<b>Track: Consumer Psychology and Economic Behavior</b> .....	54
Relation Between Repeat Consumption with Anxiety On Emerging Adult Streaming Service Subscribers   Rama Reksoprodjo.....	55
Experimental Study on the Role of Attractiveness in Enhancing Purchase Intention Moderated by Impulsive Buying Tendencies   Resekiani Bakar <sup>1</sup> , Sukmawati Ayu Dewi <sup>2</sup> , Nurul Mutmainnah <sup>3</sup> , Lukman <sup>4</sup> .....	56
<b>Track: Political Psychology and Voters Behavior</b> .....	57
Partisanship and Ideology toward Belief in Political Fake News   Vinaya Untoro <sup>1</sup> , Agnes Sianipar <sup>2</sup> , Hamdi Muluk <sup>3</sup> .....	58
<b>CLOSING SPEECH</b> .....	59
<b>Future Events</b> .....	60

# ORGANIZING COMMITTEE

---

## Conference Chair

Dr. Ayu Dwi Nindyati, M.Si., Psikolog.

*Deputy Dean II of the Faculty of Psychology, Universitas Pancasila*

## Co-Conference Chair

Dr. Hendrati Dwi Mulyaningsih

*Founder and Chairperson of Research Synergy Foundation*

## Organizing Committee

Aully Grashinta, M.Si., Psikolog.

*Universitas Pancasila*

Farida Aini, M.Psi. Psikolog.

*Universitas Pancasila*

Astri Aulia Andini Dewi, A.Md.

*Universitas Pancasila*

Furi Anjani, S.H.

*Universitas Pancasila*

Unzila Safira Maharani, S.Psi.

*Universitas Pancasila*

Thalula Aulia Almanda, S.Psi.

*Universitas Pancasila*

Nafida Qulbi Utami, S.Psi.

*Universitas Pancasila*

Aliarachma Nurul Wardhiani, S.E.

*Universitas Pancasila*

Aisyah, M.Si.

*Universitas Pancasila*

Anindya Dewi Paramita, M.Psi., Psikolog.

*Universitas Pancasila*

Evanytha, M.Si., Psikolog.

*Universitas Pancasila*

Eka Septilla AM, M.Psi., Psikolog.

*Universitas Pancasila*

Andri Setia Dharma, M.Psi., Psikolog.

*Universitas Pancasila*

Dina Estina, S.Pd.

*Universitas Pancasila*

Moerdiono Ramadhana R, M.Si.

*Universitas Pancasila*

Taufik Hidayat, S.I.Kom.

*Universitas Pancasila*

Adratusya Tsar Magfireno, S.I.Kom.

*Universitas Pancasila*

Erwan Gustiawan, S.Kom.

*Universitas Pancasila*

Jamalludin Hayat, S.Psi.

*Universitas Pancasila*

Muhammad Rizky Pratama, A.Md.

*Universitas Pancasila*

Fakhri Mardian Pratama, S.Si.

*Universitas Pancasila*

Hilman Taufik Saprudin, S.M.

*Universitas Pancasila*

Luthfiyatul Badriyah, S.Psi.

*Universitas Pancasila*

Manggar Deardini, S.H.

*Universitas Pancasila*

Taufik Hidayat

*Universitas Pancasila*

Ni Made Rai Kistyanti, M.Psi., Psikolog.  
*Universitas Pancasila*

Dr. Seta A. Wicaksana, M.Psi., Psikolog.  
*Universitas Pancasila*

Andi Tenri Faradiba, M.Si.  
*Universitas Pancasila*

Auliannisa Nastiti Ayuningtyas, S.Psi.  
*Universitas Pancasila*

Gilang Yudha Wijaya, S.Psi.  
*Universitas Pancasila*

# SCIENTIFIC REVIEWER COMMITTEE

---

**Dr. Ayu Dwi Nindyati** – Fakultas Psikologi Universitas Pancasila, Indonesia

**Dr. Jo-Ting Wei** – Providence University, Taiwan

**Dr. Wati Susiawati, MA** – State Islamic University Syarif Hidayatullah, Indonesia

**Dr. Ade Iva Murty** – Universitas Pancasila, Indonesia

**Prof. Chia-Pin Kao** – Southern Taiwan University, Taiwan

**Dr. Miftakhul Jannah** – Universitas Negeri Surabaya, Indonesia

**Dr. Rafidah Binti Abd Karim** – Universiti Teknologi MARA Perak Branch Tapah Campus, Malaysia

**Dr. Afrina Sari** – Universitas Budi Luhur Jakarta, Indonesia

**Dr. Sattambiralalage Vindya Nimanthi Perera**

**Dr. Iryna Havryliuk** – Eastern European National University, Ukraine

**Dr. Yuliana, S.Ked, M.Biomed** – Udayana University, Indonesia

**Dr. Nithya N** – Sona college of Technology, India

**Dr. Alam Zeb Khattak** – Kohat University of Science & Technology Kohat, Pakistan

**Assistant Professor Dr. Ho Meng Chuan** – UCSI University, Malaysia

**Prof. Daniel Francisco Del Rosario** – National University Philippines, Philippines

**Dr. Yeoh Sun Wei** – Taylor's University, Malaysia

# CONFERENCE CHAIR MESSAGE

---

Assalamualaikum Warrahmatullahi Wabarakatuh,

Distinguished Participants and Guest,  
Excellencies, Ladies, and Gentlemen

Good morning, ladies and gentlemen, esteemed guests, and cherished members of our community, it is a great pleasure that I welcome you all to this special occasion. Today marks a special moment in our collective journey, as we come together at “2<sup>nd</sup> International Conference on Psychology and Interdisciplinary Behavioral Studies (2<sup>nd</sup> ICP-IBS)” which hosted by Faculty of Psychology Universitas Pancasila and in partnership with Research Synergy Foundation. This year conference theme is “With ICT, Is Psychology Still Growing?”. I am honored to speech before you as we embark on this wonderful event.

It has been our privilege to convene this conference. Our sincere thanks, to the Keynote Speakers:

- Prof. Kim Uichol, the President of International Association of Indigenous and Cultural Psychology (IAICP), Rep. of Korea
- Prof. Stuart Carr from Massey University, New Zealand
- Prof. Lai Yin Ling the Deputy Provost, Heriot-Watt University, Malaysia, and
- Dr. Silverius Y. Soeharso, SE., M.M., M.Psi, Psikolog from Faculty of Psychology at Universitas Pancasila, Indonesia

We had received over 19 (nineteen) presenters in the area of Psychology, Behavioural Studies, Digital Transformation, and more related to the topic. Moreover, today’s conference also participated from approximately 350 Scholars coming over 14 (fourteen) countries around the globe. Thank you to all participants that already registered and join our conference today.

This year marks our second international conference, where the first ICP-IBS was held successfully in 2022. The theme of the 2<sup>nd</sup> International Conference on Psychology and Interdisciplinary Behavioral Studies (2<sup>nd</sup> ICP-IBS) is: “With ICT, Is Psychology Still Growing?”. This theme invites the exploration into how information and communication technologies reshape psychology in today’s digital landscape. This event unites professionals, researchers, and students to discuss how digital advancements impact research, and our understanding of human behavior, and the disciplinary that surrounds this theme.

Moreover, as we gather here today, let us embrace the spirit of togetherness and fellowship. Let us take this opportunity to build new connections, strengthen existing bonds, and share our knowledge and experience in the joy of this momentous occasion.

I extend my honest gratitude to each and every one of you for gracing us with your presence today particularly for Keynote Speakers, Session Chairs, Scientific Reviewers, Conference Committee, Presenters and also Attendees globally. Even though we gather virtually, your participation and enthusiasm will give an inspiration for all of us. I hope that this conference will progressing smoothly. Thank you.

Best regards,

***Prof. Dr. Awaluddin Tjalla, M.Pd.***  
Conference Chair of 2<sup>nd</sup> ICP-IBS

## CONFERENCE CHAIR

---



***Prof. Dr. Awaluddin Tjalla, M.Pd.***

**Dean at Faculty of Psychology Universitas Pancasila,  
Indonesia**

**Prof. Dr. Awaluddin Tjalla, M.Pd.** is a respected educator and academic leader currently serving as the Dean of the Faculty of Psychology at Universitas Pancasila. He brings a rich background in educational development and psychology, having held key roles such as Coordinator of the Doctoral Program for Research and Educational Evaluation at Universitas Negeri Jakarta (UNJ) and

Head of the Centre for Curriculum and Books at the Ministry of Education and Culture. With a doctoral degree in psychology from the University of Indonesia and advanced qualifications in educational research and planning, Dr. Tjalla has made significant contributions to curriculum development and educational evaluation in Indonesia.

In addition to his administrative roles, he has been actively involved in teaching and training, impacting both academic and government sectors. His expertise includes educational policy, teacher training, and curriculum innovation. Dr. Tjalla's career reflects a commitment to advancing educational quality and developing future generations of psychologists and educators, positioning him as a pivotal figure in Indonesia's academic landscape.

## CO-CONFERENCE CHAIR

---

***Dr. Hendrati Dwi Mulyaningsi, S.E., M.M.***

**Founder & Chairperson of Research Synergy Foundation**



**Dr. Hendrati Dwi Mulyaningsih** is the chairperson and founder of Research Synergy Foundation that has shown great commitment on creating Global Network and Research Ecosystem. This GNR ecosystem has been developing since 2017 up to the present and having increasing numbers of the member up to more than 25.000 from all around the globe. Her passion in how to create impact and co creation value among all the stake holder of RSF has made her focus on upholding integrity in the scientific process through

enhancement of RSF's support-support system as like Reviewer track, Scholarvein, Research Synergy Institute and Research Synergy Press. Thus, her work in this area has made her as the Nominee of Impactful Leadership Awards from Tallberg Foundation Sweden 2019.

As lecturer, she has been working in the University since 2008 – at present in Indonesia as assistant professor and she hold her Doctoral Science of Management graduated from School of Business and Management Institute of Technology Bandung (SBM-ITB) and she has strong interest to her research project as well as her research field in Social Entrepreneurship, Social Innovation and Knowledge Management.

As researcher, her work studies and research on this research field made her be invited as reviewer in many reputable Scopus and WOS indexed journals and as keynote speaker in many International Conferences in Philippines, Thailand, Malaysia, Indonesia, Australia, Japan, and US. She also has shown her great passion on writing her research study into some books chapter, papers and contemporary scientific articles that has already been published in Springer, Emerald, Taylor and Francis and in many reputable international publishers. The terrific association between her professional experiences as researcher, lecturer, the certified Trainer & Coach combined with her wider horizon on networking in the research area made her establish the strong commitment on having global learning platform to accelerate knowledge through many workshops and research coaching in Research Synergy Institute as one of RSF's support system.

## CONFERENCE CHAIR

---



***Dr. Ayu Dwi Nindyati, M.Si., Psikolog.***

**Head of Organizing Committee of 2<sup>nd</sup> ICP-IBS  
Deputy Dean II of the Faculty of Psychology,  
Universitas Pancasila, Indonesia**

She has been a psychologist since 1996, by undergoing her profession as Psychologist in the field of Industrial and Organizational Psychology with Competence in Talent Management, Human Capital Development, Diversity and Generation at work, Change Management, Performance Appraisal Instrument Development and Human Capital Assessment. As a lecturer and researcher at the Faculty of Psychology, Universitas Pancasila with research interests in issues of Generation Management at Work, Resistance to Change, Psychological Scale Development, Positive Organizational Behavior and Employee Engagement.

Completed her Doctoral Education at the Faculty of Psychology, Padjadjaran University in 2012; Master of Psychology education with a major in Industrial and Organizational Psychology at the Faculty of Psychology, University of Indonesia (graduated in 2003). As well as completing her undergraduate education in Psychology at the Faculty of Psychology, University of Muhammadiyah Malang in 2016. Work experience in the institution fosters professional competence and leadership competence with experience as Vice Rector of Paramadina University for Cooperation and Business Development (2015-2018), Vice Rector of Binawan University for Academic Affairs (2019-2021) and during this period she also as acting Rector of Binawan University.

Currently she is Vice Dean of the Faculty of Psychology, Universitas Pancasila for General, Finance and Human Resources (2022). Playing a role in building Indonesia's advanced human resources by being part of the Indonesian Education scholarship selection program both organized by the Ministry of Finance of the Republic of Indonesia through LPDP and the Ministry of Education, Culture, Research and Technology of the Republic of Indonesia through the Beasiswa Pendidikan Indonesia (BPI) and the Beasiswa Indonesia Maju (BIM) as a reviewer and reviewer committee. In addition, he also plays a role in maintaining and strengthening professional competence in the field of psychology by becoming the Director of Operations (2018-2020), Part of the Competency Certification Scheme Committee (2021-2025) and one of the Competency Assessors at LSP Psychology Indonesia starting from 2018.



## OPENING SPEAKER

---



***Prof. Dr. Ir. Marsudi Wahyu Kisworo, IPU.***

**Rector of Universitas Pancasila, Indonesia**

**Prof. Dr. Ir. Marsudi Wahyu Kisworo** is the Rector of Universitas Pancasila and currently a member of the Board of Directors at Indonesia's National Research and Innovation Agency (BRIN). With a PhD from Curtin University, Australia, Prof. Marsudi has held various leadership roles, including as an Independent Commissioner at PT Rajawali Nusantara Indonesia and PT Telekomunikasi Indonesia.

His career spans several significant roles, such as Rector at Perbanas Institute and Universitas Trilogi, and advisor for Indonesia's "100 Smart City" initiative by the Ministry of Communication and Information Technology. Prof. Marsudi has led impactful IT and research projects across sectors, including the design of national systems for the Supreme Court, Bank Mandiri, and the Ministry of Defense.

A dedicated educator and author, he has published numerous works on information technology, ethics, and education and has been involved in various international conferences and journals. His contributions to Indonesia's technological and educational advancements make him a respected figure in academia and public policy.



***Aully Grashinta, M.Si., Psikolog.***

**Vice Dean I (Academic and Student Affairs) of  
Faculty of Psychology, Universitas Pancasila**

Graduate from University of Indonesia, majoring in Educational Psychology and minoring in I/O Psychology for Master Degree (2005) and also Bachelor Degree (2001).

As psychologist, focusing in psychoeducation for students, school, higher education, family and parenting. Furthermore, as lecturer from 2006, concerning research in character strength. Also

contributed as one of the writing teams of the Indonesian National Works Competency Standard (SKKNI) in Assessment Center field. National Certified (BNSP) as Trainer and Assessor of Competency.

In the field of community service activity, contributed as speaker on various national media and television to respond social problems that occur based on a psychological point of view and also served as Secretary at Jakarta City Transportation Council for 2 periods and in charge to provide recommendation regarding transportation decision making to the Governor.

## CLOSING SPEAKER

---



***Aisyah Syihab, M.Si.***

**Coordinator of Event Division of 2<sup>nd</sup> ICP-IBS  
Universitas Pancasila, Indonesia**

**Aisyah Syihab, M.Si**, who is familiarly called Mbak Chacha, was born on Palembang (South Sumatra), July 19, 1987. She obtained a Master of Science degree at the Faculty of Psychology, Universitas Indonesia (UI) with specialization in Developmental Psychology on 2013. She became a lecturer at Faculty of Psychology, Universitas Pancasila since 2014, she teaches Biopsychology, Cognitive Psychology, Developmental Psychology, Psychology of Adolescence, and Cyber Psychology.

She is head of Research and Community Development (Penelitian dan Pengabdian kepada Masyarakat/PPM) at Faculty of Psychology, Universitas Pancasila. She also an Editor in Chief at Jurnal Pengabdian Psikologi Mind Set and Devotion: Jurnal Pengabdian Psikologi. Her research interest are Developmental Psychology especially on Adolescent and Young Adult, Cyber Psychology and Neuropsychology. Beside of activities on campus, she frequently become a speaker at bookstores such as Kinokuniya, Periplus and Gramedia.



***Anindya Dewi Paramita, M.Psi., Psikolog.***

**Head of Undergraduate Program in Psychology,  
Faculty of Psychology Universitas Pancasila**

**Anindya Dewi Paramita** is a licensed clinical psychologist with nearly a decade of experience specializing in child and adolescent mental health. She is also a lecturer at the Faculty of Psychology, Universitas Pancasila, where she teaches courses in abnormal psychology, psychological testing, and psychotherapy. As the co-founder of Wangbi Child Center, she provides psychological assessments and interventions for children and parents, utilizing trauma-informed and behavioral approaches.

Her work extends to various community initiatives, such as mental health awareness programs for students, teachers, and parents. Paramita has published several research articles on topics like resilience, self-harm, and childhood trauma, highlighting her commitment to evidence-based practice. Additionally, she is active as a speaker and trainer in workshops on child development, mindful parenting, and psychological first aid, demonstrating her dedication to promoting mental health literacy across different audiences.

## KEYNOTE SPEAKERS

---



***Prof. Kim Uichol***

**President of International Association of Indigenous and Cultural Psychology (IAICP), Rep. of Korea**

**Uichol Kim, Ph.D.**, Professor Emeritus (March, 2025 to present), Professor, College of Business Administration, Inha University, Korea (2005-2024); Professor, Dept. of Psychology, Chung-Ang University (1995-2005); Associate Professor, University of Tokyo, Japan (1994); Assistant Professor, University of Hawaii at Manoa, USA (1988-1994); Visiting Professor at Stanford University, USA, University of Bergen, Norway, and University of Konstanz, Germany. He serves in the Advisory Board of the International Panel on Social Progress, France; World Pandemic Research Network, Paris; Global Peter Drucker Forum, Austria; National Institute for Development Administration Business School, Thailand; Gratia Christian College, and the Centre for Management as Liberal Arts, Haeng Seng University of Hong Kong; International Islamic University, Malaysia and External examiner, University of Malaya; and Editorial Fellow, Paris Institute for Advanced Study,

He was awarded the Presidential Commendation Award, Government of Korea (2024) on March 7, 2024, for his contribution to education, which includes research and publication. It is the highest honor given to a civilian. He has been recognized as the second most cited Social Scientist in Korea (2016) and Outstanding Research Professor at Inha University and Chung-Ang University. He has nearly 10,000 citations for his publication and the h-index of 37. He has published over 200 articles and 20 books, including *Individualism and collectivism* (Sage, 1994); *Indigenous and cultural psychology* (2003, Sage; 2006, Springer); *Democracy, human rights, and peace in Korea* (2001), documenting the “Sunshine Policy” of president Kim Dae-jung, 2000 Nobel Laureate in Peace; and *Democracy, human right and Islam in modern Iran* (with Shirin Ebadi, 2003 Nobel Laureate in Peace).

He has conducted research in indigenous, organizational, and cultural psychology, focusing on family and parent-child relationship, education achievement, delinquency and school violence, organizational culture, work values HR and leadership, happiness, health, stress, and quality of life, democracy, human rights and political culture, and the digital revolution, sustainable development, ethical management and ESG (Environment, Society, and Governance). He is one of the founders and served as president of Asian Association of Social Psychology and founder and president of International Association of Indigenous and Cultural Psychology. He is the founding Editor-in-Chief for Asian Journal of Social Psychology (SSCI listed journal).

He has taught as a visiting professor at Beijing Normal University, Xiamen University, China; University of Tokyo, Kurume University, Japan; Universitäs Gadjah Mada, Universitäs Udayana, Indonesia; University of Malaysia Perlis; National Institute of Developmental Administration, Kasem Bundit University, Thailand; University of Bergen, University of Tromsø, Norway University of Stockholm, Sweden; Nordic Institute of Asian Studies, Denmark; University of Konstanz, Germany; Warsaw School of Advanced Social Psychology, Poland.

He provided lectures in the USA (Brown, Columbia, Georgetown, Harvard, Stanford, Tufts and Yale University), Europe (London School of Economics and Political Sciences, UK; University of Rome, “La Spienza,” Italy; EHESS, Paris, Le Havre University, France; University of Osnabruck, German Institute for International Educational Research), the Middle East (Haifa

University, Israel; Koc University, Turkey), and Asia (Chinese Academy of Sciences, China; Academia Sinica, National Taiwan University, National Chengchi University, Chung Yuan Christian University, Taiwan; University of Tokyo, International Christian University, Kyoto University, Japan; University of Perlis, University Malaysia Sabah; University of the Philippines-Diliman, De La Salle University; Asian Knowledge Institute, Thailand; Universities in Indonesia - Padjadjaran, Gadjah Mada, Indonesia, Hasanuddin, Tarumanagara, Islam Indonesia, Islam Bandung, Islam Negeri Malang, Kristen Marantha, Mercu Buana Yogyakarta, Ciputra, and BINUS.

He served as a consultant/advisor to global companies and governmental agencies in the USA (Pfizer, Stryker Corporation; Dept. of Health, State of Hawaii), Canada (Canadian International Development Agency), France (GeoPoste/La Poste, MAPI Institute), Germany (BASF), Indonesia (Ciputra Group), Thailand, (PTT), Japan (Toyota Motors), and Korea (Samsung, LG, Halla Group).

### **Summary of Speech**

Topic: The Science, Art, and Creativity of Understanding the Software of the Mind and Culture: Unraveling the Secrets to Health, Happiness, and Long Life

This presentation examines the software of the mind, self, and culture and understanding the secrets to happiness, health, and long life through the integration of knowledge from paleoanthropology, neurobiology, genetics, art, philosophy, religion, science, and psychology. The first part of this presentation examines the limitations of the biological and mechanistic models that ignore the software of the mind, self, and culture are articulated by reviewing the scientific advances in genetics and neurobiology. Second, Albert Bandura's Social Cognitive Theory, human agency, and self-efficacy provide the basis of understanding human creativity and software of the mind documented through 60 years of theoretical, conceptual, and empirical analysis. He articulates the importance of understanding how human intention, forethought, self-reflection, and self-reaction the precursor to human action and creativity are. Third, the understanding of the software of the mind from the Western perspective is provided by analyzing the philosophical and religious foundation of Western concept of mind and self. Fourth, the paradigm shift brought on by Renaissance and the Age of Reason that emphasizes individualism, rationality, and liberalism is reviewed. In contrast, the concept of mind and self from an East Asian perspective and Confucianism emphasizing the relatedness and connectedness of the mind to self to others and nature is reviewed. Fifth, the understanding of how culture is socialized in children to make culture feel natural and the development of the self are outlined. Sixth, this presentation reviews research on economic, social, relational, and psychological factors that reveal the secrets to happiness, health, and long life across the lifespan, generations, and cultures. The final part of this presentation will review the factors that predict and explain subjective well-being and happiness in Indonesia. The results indicate the importance of understanding family parental support, community, and Islam that is lived and practiced as a way of life in Indonesia.

# KEYNOTE SPEAKERS

---



***Prof. Stuart Carr***

**Massey University, New Zealand**

---

Holder of the UNESCO Chair on Sustainable Livelihoods, Stuart C. Carr (Stu) is also a Professor of Psychology, Industrial and Organizational (I/O) Psychology Program, at Massey University, New Zealand. He co-founded Humanitarian Work Psychology, which focuses on transitions from precarious labor, via decent work, to *Sustainable*

*Livelihoods*. Prosecuting that goal, he co-founded Projects G.L.O.W. (Global Living Organizational Wage), S.L.A.T.E. (Sustainable Livelihoods And The Ecosystem), and Cloud S.L.I.C. (Sustainable Livelihoods Collaboration). Stu's research, service, and teaching are conducted under the aegis of the 17 UN Sustainable Development Goals (SDGs), principally eradicating poverty (SDG-1), through partnerships (SDG-17) for Sustainable Livelihoods (SDG-8), which embody Climate Action (SDG-13). Stu's professional collar as a Humanitarian Work Psychology has included co-founding and co-leading a Global Task Force for Humanitarian Work Psychology. Stu is a Fellow of the Royal Society of New Zealand (RSNZ), Society for Industrial and Organizational Psychology (SIOP), and New Zealand Psychological Society (NZPS).

## **Summary of Speech**

Topic: With ICT, is Psychology still growing?

This presentation views ICT through the lens of humanitarian work psychology, and the everyday need for paid work to universally deliver sustainable livelihoods. ICT is changing the world of work and livelihoods, but so too is the rising cost of living and climate change. All three issues are intertwined, and this presentation reviews three projects focused on how they may be turned toward the social good. Project SLiC (Sustainable Livelihoods Collaboration) is designing a cloud-based teaching project across seven global universities, on how to foster Sustainable Livelihoods. Project GLOW (Global Living Organizational Wage) is a 30-country platform-assisted collaboration on how wages can meet the cost-of-living, as ICT reduces human work hours. Clean SLATE (Sustainable Livelihoods And The Ecosystem) is Indexing Sustainable Livelihoods on a regional basis, to serve, inform and support Just Transitions from carbon-intensive to cleaner forms of working, including livelihoods in ICT, for present and future generations. Together, these three collaborations illustrate how psychology is still very much growing with ICT.

## KEYNOTE SPEAKERS

---



***Prof. Lai Yin Ling.***

---

**Deputy Provost, Heriot Watt University, Malaysia**

Trained as a chemical engineer, Professor Dr. Lai's illustrious career stands as a testament to her unwavering commitment to academic excellence and visionary leadership. With a distinguished academic background encompassing a PhD, MEng, and BEng in Chemical Engineering from Universiti Putra Malaysia, specializing in process modeling and simulation, she has emerged as a pioneering force in higher education.

Renowned for her proactive approach, Professor Dr. Lai has spearheaded a series of transformative initiatives that have reshaped the educational landscape both locally and globally. Her leadership roles within two of Malaysia's largest education groups, as well as her tenure at a not-for-profit education establishment in Singapore, have catalyzed unprecedented growth and innovation, solidifying their positions as premier educational institutions in the country.

Professor Dr. Lai's dedication to fostering academic excellence is exemplified by her multifaceted leadership in business development, quality management, and curriculum design. Under her guidance, over 50 innovative academic programs have been developed, refined, and accredited globally, empowering students with the skills necessary to thrive in today's ever-evolving landscape and bolstering Malaysia's standing as a provider of quality education.

One of Professor Dr. Lai's most notable achievements is her pivotal role in leading her universities' globalization efforts. Through strategic planning and collaboration, she has established transnational programs and forged strategic partnerships with institutions worldwide, expanding the global footprint of her institutions and providing students with unparalleled international exposure and academic enrichment.

Beyond her institutional roles, Professor Dr. Lai has made substantial contributions to engineering education on a global scale. As a Founding Member of The Asian Society for Engineering Education (AsiaSEE), her efforts have been instrumental in shaping regional education development. She has also served as an engineering education consultant, quality education management consultant, and volunteer for community services both locally and abroad. Her expertise has been recognized through numerous engagements as an honorary professor and visiting professor at renowned institutions overseas, as well as a keynote speaker at prominent international summits and conferences. Her captivating presentations and insights on innovation, technopreneurship, globalization, and education have been widely acclaimed, further solidifying her reputation as a thought leader in the field.

With over 20 years of experience in education, Professor Dr. Lai has held diverse roles, including lecturer, head of program, department chair, and dean. Her leadership abilities and extensive experience were further enhanced in her previous position as Senior Advisor to the Vice-Chancellor and Pro Vice-Chancellor for Academic Operations at a major educational establishment. In her new role at HWM, Professor Dr. Lai will bring invaluable knowledge and experience, driving continued innovation and excellence in higher education.



***Assoc. Prof. David Barron***

---



**Director of Research and Enterprise at Heriot-Watt University Malaysia**

**David** is an Associate Professor at the Department of Psychology and Director of Research and Enterprise at Heriot-Watt University Malaysia (HWUM). Prior to joining HWUM, David worked at Perdana University as the Deputy Director and Reader in the Centre for Psychological Medicine. He also worked for the University of Westminster for more than a decade as a Psychology Technician and currently, Visiting Lecturer. David holds a BA. (Hons.) and an MRes. in Psychology from the University of Strathclyde and obtained his PhD from the University of Westminster.

While David has published extensively in a range of topics, his main expertise is in individual differences, conspiracy theories, and body image. He has written editorials and guidelines on the approaches to test adaptation and edited a book on psychology in Southeast Asia. David is also a prominent science communicator and author, with experience in television, radio, and digital and print media.

**Summary of Speech:**

Topic: Mirror, Mirror: The Impact of an Aging Body Image on Mind and Mood

The impact of aging on body image presents complex challenges, often exacerbated by societal ideals of beauty and youth. This keynote, Mirror, Mirror: The Impact of an Aging Body Image on Mind and Mood, examines the multifaceted relationship between body image and psychological health in older adults, with a focus on strategies for fostering resilience and self-acceptance. The presentation opens by exploring foundational concepts in body image, noting how self-perceptions evolve across the lifespan due to changes in physical appearance, health, and societal expectations. In examining the psychological impacts of aging, this talk highlights how mood, self-worth, and social perceptions are deeply intertwined with body image in later life, where ageist stereotypes and media portrayals can intensify body dissatisfaction. Additionally, strategies for cultivating a positive body image are presented, emphasising the role of self-acceptance, healthy lifestyle choices, and supportive social networks. Practical approaches to reframe aging, alongside the importance of advocacy and education, underscore the need to shift societal views on aging and celebrate body diversity. This talk encourages a holistic understanding of aging that values well-being over appearance, aiming to inspire attendees to advocate for a more inclusive perspective on body image across the lifespan.

## KEYNOTE SPEAKERS

---



***Assoc. Prof. Dr. Silverius Y. Soeharso, S.E., M.M., M.Psi., Psikolog.***

---

**Faculty of Psychology at Universitas Pancasila, Indonesia**

**Assoc. Prof. Dr. Silverius Yoseph Soeharso** widely known as Sonny, is a prominent figure in psychology and education in Indonesia, with an extensive background in both academia and industry. He holds multiple advanced degrees, including a Doctorate in Psychology from Universitas Indonesia and a Doctorate in Economics from Universitas Pancasila, graduating with high honors. Formerly, he held the position of the Dean of the Faculty of Psychology at Universitas Pancasila, for three consecutive terms, alongside his role as a teaching staff member.

Dr. Soeharso has served in various strategic roles, such as Special Staff to the Minister of Environment and Forestry, and Deputy in the Presidential Office for Ideology Development. He is also the President of the Indonesian Association of Psychology Education Providers (AP2TPI) and has been active as a senior trainer at Lemhannas RI, Indonesia's national resilience institute.

With certifications in Industrial and Organizational Psychology, Human Resources, and Strategic Management, he frequently contributes as a consultant and trainer for organizations like PT. PLN, Jamsostek, and Lemhannas RI. A member of multiple professional associations, including the American Psychological Association, Dr. Soeharso is a thought leader committed to advancing psychology in both academic and practical contexts.

Topic: In the Digital Economy era, it is time for Indonesia to transform from a natural resource-based economic development to a human resource-based? What is the role of Psychology?



# MASTER OF CEREMONY

---



*Santi Rahmawati, S.T., M.S.M.*

**Founder & Director of Global Network and Operation  
Research Synergy Foundation**

**Santi** is a Founder and Global Network Operation Director of the Research Synergy Foundation (RSF). She actively engaged with scholars around the world for strengthening the Global Research Ecosystem. As the Director of Scholarvein, she creates, maintains, and develops the integrated system for managing international scientific conference and forum since 2017 up to present and already give benefit to more than 8.448 participants coming from >85 countries. With the combination of engineering and management science educational background, she has built the optimum workflow for scholars to contribute more to the society and humanities.

Santi holds her bachelor's degree of industrial engineering from Universitas Indonesia (UI). Furthermore, she had received her Master of Science Management (focusing on Entrepreneurship and Technology Management) from Institut Teknologi Bandung (ITB) in 2015. Santi worked for several years as a Research Assistant and later as the Associate Director of the Centre for Innovation Entrepreneurship and Leadership at the Institut Teknologi Bandung. In her roles Santi helped lead the centre's Micro-Enterprise Development project, designed to support economic development throughout West Java Indonesia through the provision of entrepreneurship capability development. She also collaborates with ITB and Victoria University of Wellington, New Zealand, on a project that focuses on how Information Technology start-ups acquire finance support in developing economies.

Santi has appointed as a Gateway Advisor in F1000Research (Scopus Q1) and Taylor & Francis Open Access Advisor (Scopus Q1, Q2 & WOS). She has already been an editor of three published books (both published by Routledge, Taylor & Francis), a reviewer in many reputable international journals, an author and co-authored multiple international research articles and book chapters. Santi also serves as the Managing Editor for six international journals <https://journals.researchsynergypress.com> : IJEBCE, IJEIIS, IJEASS, JSETP, IJMADIC, and JHASIB.

## SESSION CHAIRS

---



***Dr. Yeoh Sun Wei***

**Taylor's University, Malaysia**

---

**Dr. Yeoh Sun Wei** is an accomplished educational psychologist with expertise in metacognition, emotion regulation, and literacy and numeracy development. Currently serving as the Lead of Teaching and Education Development at Taylor's University, Dr. Yeoh brings a wealth of knowledge and experience to her role.

With a background that includes 10 years of experience as a primary school teacher and 8 years as a university lecturer, Dr. Yeoh has a deep understanding of both the practical and theoretical aspects of education. Her work as a certified HRDF trainer further demonstrates her commitment to professional development and capacity building within the field.

Dr. Yeoh's research interests encompass various aspects of cognitive and emotional development, with a particular focus on how these factors influence learning outcomes. Her expertise in metacognition and emotion regulation underscores her dedication to promoting effective learning strategies and fostering students' holistic development.

As a respected figure in the field of educational psychology, Dr. Yeoh is actively involved in both academic research and practical application, striving to enhance educational practices and support educators in their quest to facilitate optimal learning experiences for all students.



***Assistant Professor Dr. Ho Meng Chuan***

**UCSI University, Malaysia**

---

**Assistant Professor Dr. Ho Meng Chuan** is holding the role of Head of the Centre for Pre-U Studies at UCSI University's Springhill Campus, which is located in the Port Dickson, Negeri Sembilan. Dr. Ho's research interests are centered on the intricate and multifaceted aspects of subjective well-being and family ecology. Through his scholarly endeavors, he seeks to identify and understand the fundamental elements that contribute to the development of

subjective well-being, shedding light on the factors that influence individual and familial contentment and happiness.

Beyond his academic roles, Dr. Ho is actively engaging in different school talks. These presentations focus on enhancing students' study skills and overall well-being. By sharing his insights and expertise, he empowers students to navigate the academic world more effectively and to lead healthier and fulfilling lives.

## SESSION CHAIRS

---



*Assoc. Prof. Dr. Alam Zeb Khattak*

**IQRA National University, Pakistan**

**Dr. Alam Zeb Khattak** has Doctorate in Psychology from International Islamic University Islamabad and master of Philosophy in Psychology with distinction from Preston University and having Post graduate Diploma in Criminology from AIOU Islamabad. Dr Alam has worked as faculty member in Dept. of Psychology KUST Kohat. He has experience in research in multiple areas including Organizational Psychology, Clinical Psychology, Islamic Psychology, Criminology, extremism, substance abuse and psychological testing. He has published number of articles in the mentioned areas in different research journals and presented in national and international conferences. He is also involved as expert reviewer in different national and international journals.

He is member of the scientific review committee of Research Synergy Foundation (RSF) and also In Charge Research Ethics Board Pakistan Association of Cognitive Therapy Pakistan. Research articles of Dr. Alam Zeb Khattak can be seen in different well reputed journals like PLOS one, Journal of Substance Abuse, Pakistan Journal of Psychological Research, Applied Nursing Research, International Journal of Creativity and Change etc. Currently Dr. Alam is working on Islamic Psychology, the emerging area of Psychology. Dr. Alam is actively involved in different national and international academic societies like Pakistan Psychological Association, Pakistan Psychological Society, International Society of Substance use Professionals (ISSUP), The World Association of Scientists and Professionals (TWASP), Australian & New Zealand Mental Health Association. Currently working as Associate Professor & Head Psychology (program), Dept. of Business Administration IQRA National University Peshawar, Pakistan.



*Prof. Daniel Francisco Del Rosario*

**National University Philippines, Philippines**

**Mr. Daniel Del Rosario** graduated with a Bachelor of Arts, Major in History degree from the Ateneo de Manila University in 2017. He completed his Master of Arts, Major in History degree in the same University in 2022. After completing his MA, he began pursuing doctoral studies in La Salle in 2024.

He did research for the Chinatown Museum in 2018 during his graduate studies and presented a paper on the Blair-Robertson primary source compilation in the Ateneo Kasaysay Student Conference that year. He also presented a paper on Church Historiography in the very first Ateneo Loyola Schools Graduate Research Festival in 2019. He also participated in the first International Summer School in Transnational History in Yogyakarta, Indonesia, in 2018. Currently, he teaches Social Science subjects in National University, while pursuing a Ph.D. in Sociology in De La Salle University. As a researcher, he specializes in Philippine political and religious history. He is also engaging himself in the study of educational sociology.

## MODERATORS

---



***Dr. Bimo Wikantioso, M.Psi., Psikolog.***

**Universitas Pancasila**

**Dr. Bimo Wikantioso** is a mental health professional and lecturer at the Faculty of Psychology, Universitas Pancasila. He holds a Ph.D. in Psychology from Universitas Atma Jaya Jakarta and a master's degree in Clinical Psychology from Universitas Padjajaran. Dr. Bimo is also the founder of Matala.id, an online assessment platform, and has experience as an HR consultant for various companies. His expertise spans mental health, therapy, psychological research, and testing, along with a strong background in human resources.



***M. Akhyar, M.Si***

**Universitas Pancasila**

**Muhammad Akhyar** is a dedicated psychologist and educator currently pursuing his Doctorate in Psychology at the University of Indonesia. He is a lecturer at Universitas Pancasila and the founder of Sekolah Bermain Matahari, a free preschool supporting community development in Depok. With a strong focus on social intervention, his research explores themes like religious moderation, resilience against extremism, and subjective well-being, often collaborating with institutions such as UNDP and UIN Jakarta.

Akhyar also serves as Managing Editor of the Jurnal Psikologi Sosial at Universitas Indonesia, contributing to the field through research and publications on identity formation, religious beliefs, and community resilience. His academic and practical contributions highlight his commitment to fostering social stability and mental health resilience within educational and community settings.

## MODERATORS

---



***Endro Puspo Wiroko, M.Psi., psikolog***  
**Universitas Pancasila**

---

**Endro Puspo Wiroko** has been a full-time lecturer and researcher at the Faculty of Psychology, Universitas Pancasila, Jakarta, since 2015. He completed his Bachelor of Psychology at Universitas Gadjah Mada and his Master's degree in Industrial & Organisational Psychology at Universitas Indonesia. He is now pursuing a Doctoral degree in Psychology at Universitas Padjadjaran. He not only does research in Industrial Organizational Psychology, but he also actively delivers human resources consulting services to his client companies. His research includes work engagement, positive organizational psychology, and Islamic Psychology. He can be contacted at [endro.puspowiroko@univpancasila.ac.id](mailto:endro.puspowiroko@univpancasila.ac.id).



***Vinaya, M.Si.***  
**Universitas Pancasila**

---

**Vinaya** is a faculty member at the Faculty of Psychology, Universitas Pancasila, where she has been teaching since 2012. Currently, she is pursuing a doctoral degree in Psychology at Universitas Indonesia, furthering her academic and research expertise. Her research interests center on understanding the psychological factors that influence people's beliefs in fake news, a timely and socially relevant topic. Additionally, Vinaya has served as a speaker for the Digital Literacy program by the Indonesian Ministry of Communication and Information (Kominfo) from 2022 to 2023, contributing her insights into digital media literacy and misinformation awareness. Her combined academic pursuits and involvement in digital literacy initiatives underscore her commitment to addressing contemporary psychological and social issues.

# CONFERENCE PROGRAM

Tuesday | November 12, 2024

<a href="https://icpibs.com">https://icpibs.com</a>		Organized by :      	
		Supported by :       	
CONFERENCE PROGRAM			
2nd International Conference on Psychology and Interdisciplinary Behavioral Studies (2nd ICP-IBS)			
VIRTUAL CONFERENCE: November 12-13, 2024			
Tuesday, 12 November 2024			
Time (UTC+7)	Dur'	Activity	
Main Room		Zoom Link: <a href="https://cutt.ly/2ndICP-IBS">https://cutt.ly/2ndICP-IBS</a> OR <a href="https://us06web.zoom.us/j/86787888970?pwd=PsqbwDQ0tjEbYhsa3YspzPQslAVANd.1">https://us06web.zoom.us/j/86787888970?pwd=PsqbwDQ0tjEbYhsa3YspzPQslAVANd.1</a>  Meeting ID: 867 8788 8970 Passcode: 2ndICPIBS	
7:55 - 8:05	0:10	Participant Login and Join Virtual Conference by ZOOM	
8:05 - 8:20	0:15	Welcoming and Conference Agenda announcement by MC	
8:20 - 8:30	0:10	Listening to the national anthem, "Indonesia Raya." Listening Universitas Pancasila Hymne	
8:30 - 8:40	0:10	Welcome Remarks of 2nd ICP-IBS DAY 1: Dr. Ayu Dwi Nindyati, M.Si., Psikolog Head of Organizing Committee 2nd ICP-IBS Universitas Pancasila	
8:40 - 8:50	0:10	Welcoming Speech: Prof. Dr. Awaluddin Tjalla, M.Pd. Conference Chair of 2nd ICP-IBS Dean of Faculty of Psychology, Universitas Pancasila	
8:50 - 9:00	0:10	Global Research Ecosystem Introduction: Dr. Hendrati Dwi Mulyaningsih Co-Conference Chair of 2nd ICP-IBS Founder & Chairperson of Research Synergy Foundation	
9:00 - 9:10	0:10	Opening Speech: Prof. Dr. Ir. Marsudi Wahyu Kisworo, IPU Rector of Universitas Pancasila	
9:10 - 9:15	0:05	Conference E-Group Photo	
9:15 - 10:30	1:15	Keynote Speaker: Associate Prof. Dr. Silverius Y. Soeharso, S.E., M.M., Psikolog Lecturer at Universitas Pancasila  Moderator: Dr. Bimo Wikantioso, M.Psi., psikolog	
10:30 - 10:35	0:05	Token of Appreciation for Keynote Speaker & Moderator	
10:35 - 10:40	0:05	Announcement and preparation of Online Presentation Session 1 & 2	
10:40 - 10:50	0:10	Session chairs Introduction of Online Presentation Day 1 - Session 1 Associate Professor Dr. Alam Zeb Khattak - IQRA National University, Pakistan	
10:50 - 12:05	1:15	Online Presentation Session 1 for max. 5 presenters 15 minutes/presenter	
12:05 - 12:15	0:10	Awarding Certificate of Presentation, Testimonial, and Post-conference information announcement	
12:15 - 13:00	0:45	Break (Video looping)	
13:00 - 13:10	0:10	Session chairs Introduction of Online Presentation Day 1 - Session 2 Assistant Professor Dr. Ho Meng Chuan - UCSI University, Malaysia	
13:10 - 14:10	1:00	Online Presentation Session 2 for max. 4 presenters 15 minutes/presenter	
14:10 - 14:20	0:10	Awarding Certificate of Presentation, Testimonial, and Post-conference information announcement	
14:20 - 15:35	1:15	Keynote Speaker: Prof. Kim Uichol President of International Association of Indigenous and Cultural Psychology (IAICP) Rep. of Korea  Moderator: M. Akhyar, M.Si.	
15:35 - 15:40	0:05	Token of Appreciation for Keynote Speaker & Moderator	
15:40 - 15:55	0:15	Awarding Ceremony Best Presentation Session Chairs Recognition	
15:55 - 16:00	0:05	Closing Speech of 2nd ICP-IBS DAY 1: Aisyah Syihab, M.Si Coordinator of Event Division of 2nd ICP-IBS Universitas Pancasila	



# CONFERENCE PROGRAM

Wednesday | November 13, 2024

<a href="https://icpibs.com">https://icpibs.com</a>		Organized by :      Supported by :       
<b>CONFERENCE PROGRAM</b> <b>2nd International Conference on Psychology and Interdisciplinary Behavioral Studies (2nd ICP-IBS)</b> <b>VIRTUAL CONFERENCE: November 12-13, 2024</b>		
<b>Wednesday, 13 November 2024</b>		
<b>Time (UTC+7)</b>	<b>Dur'</b>	<b>Activity</b>
<b>Main Room</b>		<b>Zoom Link:</b> <a href="https://cutt.ly/2ndICP-IBS">https://cutt.ly/2ndICP-IBS</a> <b>OR</b> <a href="https://us06web.zoom.us/j/86787888970?pwd=PsqbwDO0tjEbYhsa3YspzPQslAVANd.1">https://us06web.zoom.us/j/86787888970?pwd=PsqbwDO0tjEbYhsa3YspzPQslAVANd.1</a> Meeting ID: 867 8788 8970 Passcode: 2ndICP-IBS
8:50 - 9:00	0:10	<b>Participant Login and Join Virtual Conference by ZOOM</b>
9:00 - 9:10	0:10	Welcoming and Conference Agenda announcement by MC
9:10 - 9:15	0:05	<b>Welcome Remarks of 2nd ICP-IBS DAY 2:</b> <b>Aully Grashinta, M.Si., Psikolog</b> Vice Dean 1 (Academic, Student and Research), Faculty of Psychology Universitas Pancasila
9:15 - 9:20	0:05	<b>E-Group Photo</b>
9:20 - 10:35	1:15	<b>Keynote Speaker:</b> <b>Prof. Dr. Lai Yin Ling</b> Deputy Provost, Heriot-Watt University, Malaysia  <b>Moderator:</b> Vinaya, M.Si.
10:35 - 10:40	0:05	Token of Appreciation for Keynote Speaker & Moderator
10:40 - 10:50	0:10	<b>Session chairs Introduction of Online Presentation Day 2 - Session 1</b> <b>Dr. Yeoh Sun Wei</b> - Taylor's University, Malaysia
10:50 - 12:05	1:15	<b>Online Presentation Session 1 for max. 5 presenters</b> 15 minutes/presenter
12:05 - 12:15	0:10	Awarding Certificate of Presentation, Testimonial, and Post-conference information announcement
12:15 - 13:00	0:45	<b>Break</b> (Video looping)
13:00 - 14:15	1:15	<b>Keynote Speaker:</b> <b>Prof. Stuart Carr</b> Massey University, New Zealand  <b>Moderator:</b> Endro Puspo Wiroko, M.Psi., Psikolog
14:15 - 14:20	0:05	Token of Appreciation for Keynote Speaker & Moderator
14:20 - 14:30	0:10	<b>Session chairs Introduction of Online Presentation Day 2 - Session 2</b> <b>Prof. Daniel Francisco Del Rosario</b> - National University Philippines, Philippines
14:30 - 15:45	1:15	<b>Online Presentation Session 2 for max. 5 presenters</b> 15 minutes/presenter
15:45 - 15:55	0:10	Awarding Certificate of Presentation, Testimonial, and Post-conference information announcement
15:55 - 16:10	0:15	Short Break and Back to Main Room for 2nd ICP-IBS Closing Ceremony
16:10 - 16:25	0:15	<b>Awarding Ceremony</b> <b>Best Presentation</b> <b>Best Paper</b> <b>Session Chairs Recognition</b>
16:25 - 16:30	0:05	<b>Closing Speech of 2nd ICP-IBS DAY 2:</b> <b>Anindya Dewi Paramita, M.Psi., Psikolog</b> Head of Undergraduate Program in Psychology, Faculty of Psychology Universitas Pancasila

# LIST OF PRESENTERS

**Tuesday| November 12, 2024**

**Room:** Main Room Session 1

**Time:** 10:40 - 12:05 (UTC+7)

**Session Chairs:** Associate Professor Dr. Alam Zeb Khattak - IQRA National University, Pakistan

Track Educational Psychology		
Paper ID	Presenter	Paper Title
CBS24105	Wresti Wrediningsih	Promoting Student Happiness in Learning During The Covid-19 Pandemic: A Phenomenological Study In Elementary School
720842	Salindri Anita Rahman	Exploration of the Impact of Board Games on Internet Addiction and Screen Time Management: A Case Study of Family Link App Usage in Generation Alpha
468544	Helvy Yunida	Development of Evaluation Instruments for Acceleration of Stunting Reduction Programs in Specific Interventions
Track Industrial and Organizational (I/O) Psychology		
Paper ID	Presenter	Paper Title
923058	Dian Firly	The Effect of Resilience and Social Support on the Level of Life Satisfaction of Gen Z Jakarta
475372	Endro Puspo Wiroko	Keys Factors Influencing Employee Performance in the Indonesian Automotive Component Sector: A Delphi Study

**Room:** Main Room Session 2

**Time:** 13:00 - 14:10 (UTC+7)

**Session Chairs:** Assistant Professor Dr. Ho Meng Chuan - UCSI University, Malaysia

Track Educational Psychology		
Paper ID	Presenter	Paper Title
377831	Sudharno Dwi Yuwono	Construct Validity of The Moral Reasoning Scale for Adolescents Model I (MRSA-M1)
595443	Andi Tenri Faradiba	Reading Comprehension on a Laptop, a Cellphone, and Paper: Which One Is Better?
CBS24106	Lisa Dwi Ningtyas	Relationship between School Climate and Teacher Job Satisfaction: A Meta-Analytic Study
Track Political Psychology		
Paper ID	Presenter	Paper Title
829458	Vinaya Untoro	Partisanship and Ideology toward Belief in Political Fake News



# LIST OF PRESENTERS

**Wednesday| November 13, 2024**

**Room:** Main Room Session 1

**Time:** 10:40 - 12:05 (UTC+7)

**Session Chairs:** Dr. Yeoh Sun Wei - Taylor's University, Malaysia

Track Clinical Psychology		
Paper ID	Presenter	Paper Title
CBS24101	Edi Iskandar	The Effect of Social Support on Existential Gratitude in People Living With HIV (PLWH) in DKI Jakarta Province
297984	Masoud Rezaei	Family Caregiver Experiences of Terminal Cancer Caregiving Trajectory: A Qualitative Study in Palliative Care Setting
Track Industrial and Organizational (I/O) Psychology		
Paper ID	Presenter	Paper Title
860996	Farida Aini	The Relationship Between Proactive Personality and Career Growth among Working Students
CBS24104	Ayu Nindyati	The Role of Self-efficacy and Locus of Control on Work Readiness Among Gen Z
Track Environmental Psychology		
Paper ID	Presenter	Paper Title
501599	Silverius Y. Soeharso	The Role of Social Acceptance as a Mediator Variable in the Influence of Environmental Awareness on Willingness to Pay for Waste to Energy

**Room:** Main Room Session 2

**Time:** 14:20 - 15:45 (UTC+7)

**Session Chairs:** Prof. Daniel Francisco Del Rosario - National University Philippines, Philippines

Track Consumer Psychology		
Paper ID	Presenter	Paper Title
983424	Rama Reksoprodjo	Relation Between Repeat Consumption with Anxiety on Emerging Adult Streaming Service Subscribers
379848	Resekiani Bakar	Experimental Study on the Role of Attractiveness in Enhancing Purchase Intention Moderated by Impulsive Buying Tendencies
Track Social Psychology		

<b>Paper ID</b>	<b>Presenter</b>	<b>Paper Title</b>
682568	Cindy Febriani Thalia	The Role of Moral Disengagement in Cyberbullying Bystander (Cyber-Bystander) Behaviour on Instagram among Late Adolescents
CBS24102	Kern Ismed	Overview of Coping Strategies for Caregivers of Elderly Individuals with Dementia at Senior Care Darmawan Park Sentul
841923	Dela Meiriza Usman	The Role of Narcissism on Problematic Social Media Use in Emerging Adulthood Instagram Users

# Track: I/O Psychology and Business Psychology

Supported by :



# The Relationship Between Proactive Personality and Career Growth Among Working Students

| Zuana Prasetia Perdana Nugraha<sup>1</sup>, Evanytha<sup>2</sup>, Farida Aini<sup>3</sup>

<sup>1,2,3</sup>Universitas Pancasila

---

## Abstract

Education plays a crucial role in shaping human resources that are of high quality and integrity. If students who engage in both studying and working do not possess strong proactive personality traits, it will negatively impact their career growth. This study aims to examine the relationship between proactive personality and career growth among students who study while working. This research employs a quantitative method, involving 394 respondents from the JABODETABEK area. The measurement tools used in this study are the Proactive Personality Scale developed by Bateman and Crant (1993) and the Career Growth Scale developed by Weng and Xia Ni (2023). The analysis method used in this study is the Spearman rank-order correlation test, as the data obtained were not normally distributed. The results indicate a significant positive relationship between proactive personality and career growth ( $p = 0.000$ ) with an  $r$ -value of 0.600, suggesting that the higher the proactive personality, the greater the career growth experienced by students who study while working.

*Keywords: proactive personality, career growth, working students*

---

# The Role of Self-Efficacy and Locus of Control on Work Readiness Among Gen Z

| Ayu Nindyati<sup>1</sup>, Rizqi Awalia Fatimah Elzahra<sup>2</sup>, Rivaldi Izza Rahmadhani<sup>3</sup>

<sup>1</sup>Universitas Pancasila, <sup>2</sup>Fakultas Psikologi Universitas Paramadina, <sup>3</sup>Universitas Muhammadiyah Malang

---

## Abstract

As a generation who start entering the work force. Gen Z faces unique challenges and opportunities as they transition from education to employment. One issues that come up from this transition was readiness to work. The study explored how self-efficacy and locus of control influence work readiness in Generation Z. The research method use was quantitative research with multiple regression statistic to analyse the data. Respondents of the research were 70 students higher education in the last year ((M= 17; F= 53) and mean of age = 20.9 (20 years 10 months). The data were collect with questionnaire of general self-efficacy, locus of control and work readiness. The result show that self-efficacy significantly influence to work readiness, and locus of control did not influence to work readiness among generation Z. Based on this finding it can see that to improve the students' readiness to work, the intervention of self-efficacy was more useful than locus of control. This model suggests that training programs or interventions aimed at enhancing self-efficacy may be more effective in increasing work readiness than those that concentrate solely on the internal locus of control, especially among generation Z with all the uniqueness.

*Keywords: self-efficacy, locus of control, work readiness, gen Z*

---

# The Effect of Resilience and Social Support on the Level of Life Satisfaction of Gen Z Jakarta

| Dian Firly<sup>1</sup>, Ayu Dwi Nindyati<sup>2</sup>, Seta Ariawuri Wicaksana<sup>3</sup>

<sup>1,2,3</sup>Fakultas Psikologi Universitas Pancasila

---

## Abstract

Generation Z, born between 1995 and 2012, grew up in an era of rapid technological development and spent much time on the internet, including social media. This convenience May make them less mentally resilient than previous generations. VAAY's 2021 report ranked Jakarta ninth as one of the most stressful cities. In line with BPS data in 2021 related to the Happiness Index in DKI Jakarta Province, which includes the dimensions of life satisfaction, the average value is still below the national average. It has decreased from the previous measurement above the national average value. Life satisfaction in the relationship with perceived stress shows that life satisfaction has a health-maintaining effect on the well-being index, primarily mental. This quantitative, cross-sectional study aims to determine the effect of resilience and social support on Generation Z in Jakarta. The analysis technique used multiple linear regression techniques. The subjects in this study were men and women aged 15-24 years old who live in Jakarta. The results show that resilience and social support influence Generation Z Jakarta by 42%. The conclusion is that life satisfaction is influenced by factors closely related to resilience and social support. On the other hand, it is influenced by conditions such as happiness (Ermiş-Mert, 2023), mental health ( Baker et al., 2022), and other factors beyond this study's scope. The most decisive influence factor was resilience, followed by social support.

*Keywords: life satisfaction, resilience, social support, Generation Z*

---

# Keys Factors Influencing Employee Performance in the Indonesian Automotive Component Sector: A Delphi Study

| Endro Puspo Wiroko

Faculty of Psychology, Universitas Pancasila

---

## Abstract

This study investigates the key factors influencing employee performance in the Indonesian automotive component sector, concentrating on how long-standing and new challenges influence workers' productivity. Given the fast-changing, technology-empowered landscape, the study aims to identify the most critical factors of employee performance that automotive component firms must address to remain stable and expand. The study uses the Delphi Method, with a panel of 43 experts conducting two rounds of surveys to identify and rank the factors influencing employee performance. This iterative process facilitated the refinement of expert insights, resulting in a consensus on the most significant factors that affect performance in the automotive component sector. The findings demonstrate that leadership and management are the paramount determinants influencing employee performance, followed by the working environment, competency-based human resource management, work-family enrichment, and workplace gratitude. This research enhances the theoretical framework of employee performance by merging modern difficulties unique to the automotive component sector with the established human resources management framework: Ability–Motivation–Opportunity (AMO). The research offers practical insights for automotive component companies, underscoring the necessity of comprehensive strategies that consider employee well-being and organizational objectives. These findings provide essential insights for stakeholders to improve employee productivity in the automotive component industry, empowering them to make informed decisions and implement effective strategies.

*Keywords: Employee Performance, Automotive Component Sector, Workforce, Delphi Method, Economic Growth*

---

# Track: Social and Cultural Psychology



# The Role of Moral Disengagement in Cyberbullying Bystander (Cyber-Bystander) Behaviour on Instagram among Late Adolescents

| Cindy Febriani Thalia<sup>1</sup>, Aisyah Syihab<sup>2</sup>, Muhammad Akhyar<sup>3</sup>

<sup>1,2,3</sup>Universitas Pancasila

---

## Abstract

There are three main roles in a cyberbullying situation: the perpetrator, the victim, and the bystander who witnesses the bullying (cyberbullying bystander or cyber-bystander). Cyber-bystanders can be categorized into three types: passive outsider online, defender of cyber victim online, and reinforcer of cyberbully online. This study aims to explore whether there is a role of moral disengagement in cyber-bystander behaviour on Instagram among late adolescents. Therefore, this research uses a quantitative regression approach. The sampling technique used convenience sampling involving 364 participants in Jabodetabek (Jakarta, Bogor, Depok, Tangerang, and Bekasi) who meet the criteria of participants in the study with an age range of 15-20 years (late adolescents) and have Instagram. The measurements used in this study were the Cyberbullying Bystander Scale (CBS) by Sarmiento et al. (2019) and the Moral Disengagement Scale by Hymel et al. (2005). The results of this study show that moral disengagement plays a significant role in all three cyber-bystander behaviours: passive outsider online, defender of cyber victim, and reinforcer of cyberbully online.

*Keywords: Keywords: moral disengagement, cyber-bystander, cyberbullying, bystander, late adolescents*

---

# Overview of Coping Strategies for Caregivers of Elderly Individuals with Dementia at Senior Care Darmawan Park Sentul

| Kern Ismed<sup>1</sup>, Maharani Ardi Putri<sup>2</sup>, Ni Made Rai Kistyanti<sup>3</sup>

<sup>1,2,3</sup>Universitas Pancasila

---

## Abstract

Dementia is a clinical condition that is mostly experienced by the elderly and can be identified by progressive cognitive decline that disrupts one's ability to be independent. Elderlies that suffer dementia requires special services from others as caregivers who can provide good care in everyday life. However, caregivers often experience personal difficulties in caring for the elderlies with dementia. Hence, they need strategies to deal with problems that might occur. This paper is qualitative research with a case study approach. The aim of this study is to describe the coping strategies of caregivers of elderly dementia at Darmawan Park Sentul Senior Care. The respondents of this study were two caregivers who worked to care for elderly people with dementia in Senior Care. Results shows that both respondents developed two coping strategies, namely problem focused coping and emotion focused coping. The dominant coping strategy used by both respondents in this study is emotion focused coping. The aspects of emotion focused coping that are still used by both respondents are seeking social emotional support and self-control. The form of effort most often used by both respondents in dealing with their problems is by telling the closest people around them to get advice, attention, and suggestions.

*Keywords: coping strategies, caregiver, elderly with dementia*

---

# The Role of Narcissism on Problematic Social Media Use In Emerging Adulthood Instagram Users

| Dela Meiriza Usman<sup>1</sup>, Aisyah Syihab<sup>2</sup>, Andri Setia Dharma<sup>3</sup>  
<sup>1,2,3</sup>Universitas Pancasila

---

## Abstract

The increasing use of social media, particularly among emerging adults, has brought attention to the issue of problematic social media use (PSMU). PSMU is characterized by excessive engagement and dependency. Previous studies suggest a relationship between narcissism and problematic social media behavior. However, there is limited research exploring this relationship in the Indonesian context. This study aims to determine the role of each dimension of narcissism on problematic social media use in emerging adulthood Instagram users. The participants of this study are active Instagram users aged 18 to 25 years. This research was conducted using a quantitative approach. This study used convenience technique sampling and obtained a total of 224 participants. The measuring instruments used in this study are the Narcissistic Admiration and Rivalry Questionnaire (NARQ) to measure narcissism variables in each dimension and the Bergen Social Media Addiction Scale (BSMAS) to measure problematic social media use variables. The analysis was conducted using multiple linear regression. The results of this study indicate that narcissism in the admiration and rivalry dimensions ( $p < 0.05$ ) plays a significant and positive role in problematic social media use in emerging adulthood individuals who use Instagram. These findings suggest that individuals with higher levels of narcissistic traits, especially those seeking admiration or engaging in rivalry behaviors, are more likely to exhibit problematic social media behaviors.

*Keywords: Emerging adulthood, Instagram Users, Narcissism, Problematic Social Media Use*

---

# Track: Developmental and Clinical Psychology

Supported by :



# **The Effect of Social Support on Existential Gratitude in People Living with HIV (PLWH) in DKI Jakarta Province**

| **Edi Iskandar<sup>1</sup>, Dearly<sup>2</sup>**

<sup>1,2</sup>Universitas Mercu Buana

---

## **Abstract**

People Living with HIV (/PLWH) often experience medical and psychological problems. Applying existential gratitude is one way to deal with all the psychological problems. Existential gratitude is the concept of gratitude for the destiny that occurs in life even though it is unpleasant. This study examines social support's effect on existential gratitude in PLWH in DKI Jakarta province. Two hundred and ten respondents were obtained using the purposive sampling technique. Data were collected using the Existential Gratitude Scale (EGS), and The Multidimensional Scale of Perceived Social Support (MSPSS). Data were analyzed using simple linear regression techniques with the help of SPSS 24.00. The results showed that social support significantly affects existential gratitude among PLHIV in DKI Jakarta province, with a contribution of 6.1 percent ( $R^2=0.061$ ,  $p=0.00$ ). This study also found that social support by other significant (which comes from health workers) has the highest correlation with existential gratitude. This study has implications for increasing social support from family, friends, and health workers to improve the quality of life and well-being of PLWH.

*Keywords: Keywords: Existential Gratitude, Social Support, PLWH*

---

# Family Caregiver Experiences of Terminal Cancer Caregiving Trajectory: A Qualitative Study in Palliative Care Setting

| Masoud Rezaei

Iran University Of Medical Science

---

## Abstract

**Background:** Caring for a family member with cancer in the advanced stages of the disease is a challenging and exhausting experience that comes with high levels of emotional and psychological difficulties. Therefore, gaining a comprehensive and deep understanding of the caregiving challenges and hardships can be a step towards addressing the future problems for the family caregivers of these patients. **Objective:** The present study was carried out to investigate the care challenges and problems faced by family caregivers of patients with advanced cancer. **Methods:** The present study was conducted using qualitative content analysis method. In this method, a semi-structured in-depth interview was conducted with 13 family caregivers of patients with advanced stages of cancer. Participants were selected purposefully and interviews were continued until data saturation. All interviews were recorded, transcribed and analyzed through conventional content analysis. The results were reported in the form of themes, subcategories and categories. **Results:** The majority of the study participants were women aged between 35 and 75 years old. From the experiences of the participant's theme of Fence of Caring emerged, which was extracted from the subcategories of "physical and mental collapse", "getting stuck in care difficulties", "distant attention care" and "mental health deterioration of family members". It describes the caregiving problems and challenges faced by family caregivers. **Conclusion:** This study sheds light on the challenges faced by Iranian family caregivers who provide care for advanced cancer patients. Understanding these challenges can help in designing appropriate interventions to reduce the burden of caregiving and prepare caregivers for accepting loss.

*Keywords: Family Caregiver, Caring Experiences, Palliative Care, Cancer*

---

# Track: Educational Psychology

Supported by :



# Construct Validity of The Moral Reasoning Scale For Adolescents Model I (MRSA-M1)

| Awaluddin Tjalla

Faculty of Psychology, Universitas Pancasila

---

## Abstract

Measuring moral reasoning in adolescents has its own complexities. There needs to be an effort to develop a scale that considers various factors. On the other hand, the idea of measuring Kohlberg's moral reasoning which has had a strong influence over the years has also received a lot of criticism. This encourages this research, so the purpose of this study is to develop a moral reasoning scale based on Kohlberg's morals. The development method used with the research and development model by conducting construction tests through raters' opinions and conducting reliability analysis on 731 respondents of grade XI students in Jakarta, Makassar and Yogyakarta. Overall, the results of data analysis show that the scale is adequate with a Cronbach alpha value of 0.890. The study still has some limitations that are expected to be followed up in the future. Keywords: Moral reasoning, construct validity, Adolescent

*Keywords: Keywords: Moral reasoning, construct validity, Adolescent*

---



# Development of Evaluation Instruments for Acceleration of Stunting Reduction Programs in Specific Interventions

| Awaluddin Tjalla<sup>1</sup>, Helvy Yunida<sup>2</sup>

<sup>1</sup>Faculty of Psychology, Universitas Pancasila, <sup>2</sup>Universitas Negeri Jakarta

---

## Abstract

The activity of compiling research instruments itself is called instrument development. An instrument is a tool that meets academic requirements so that it can be used as a measuring tool to measure an object of measurement. Evaluation is an activity to check the extent to which the quality of the activity is designed successfully. The stunting program is one of the national programs that is currently being intervened by various government agencies. Acceleration and prevention of stunting is a program that is being implemented in order to reduce stunting rates in Indonesia. These institutions collaborate to jointly reduce stunting rates from government agencies to the village level. The impact of stunting on the education of children affected by stunting is that the child's IQ will be low. With a low IQ level, Human Resources will decrease. The purpose of this study was to develop an instrument for an acceleration program for overcoming stunting with certain interventions. The research method uses instrument development. Instrument development uses a Likert scale with five levels, namely strongly agree to strongly disagree. Research Results: Health center officers are in the good category, customers are in the good category and posyandu cadres are in the less category. Conclusion: The instrument for health center officers, customers and integrated health post cadres is valid, reliable and measurable, as a tool for collecting data on accelerating and reducing stunting in certain interventions.

*Keywords: Instrument Development, Program Evaluation, Stunting, Specific Interventions*

---

# Exploration of the Impact of Board Games on Internet Addiction and Screen Time Management: A Case Study of Family Link App Usage in Generation Alpha

| Salindri Anita Rahman  
Universitas 17 Agustus 1945 Surabaya

---

## Abstract

Exploration of the Impact of Board Games on Internet Addiction and Screen Time Management: A Case Study of Family Link App Usage in Generation Alpha The rapid rise of technology has increased digital device usage, particularly among Generation Alpha, leading to challenges such as internet addiction and uncontrolled screen time, which affect children's mental and social well-being. According to Young (1998), internet addiction involves excessive time spent online and difficulty controlling use, even when users are aware of its harmful effects. Internet addiction is especially prevalent among elementary school children aged 6-12, contributing to higher anxiety and stress levels. Healthline reports that 40% of children experience heightened stress from excessive social media use due to social pressures and comparisons with others, disrupting their emotional balance and mental health (National Center for Health Research; Neuroscience News). Board Games and Family Link App as Solutions: To address these issues, offline activities like board games are being promoted. Additionally, parental control apps such as Family Link help manage children's screen time and monitor their online behavior. This study explores how board games can reduce internet addiction and improve screen time management among Generation Alpha through qualitative case studies with interviews involving parents and children who use Family Link. Theoretical Framework • Media Substitution Theory posits that offline activities like board games reduce digital dependency by occupying time spent online, offering enriching social and cognitive experiences (Roe et al., 2020). • Self-Regulation Theory highlights the importance of self-discipline in managing screen time and behavior in a distraction-filled environment (Baumeister & Vohs, 2007). Key Findings 1. Social Interaction: Board games encourage physical and social engagement, reducing screen time. Parents reported increased involvement in offline activities. 2. Parental Control: Family Link effectively helps parents monitor and limit children's screen time, fostering healthier digital habits. 3. Time Management: Children who engage in board games showed improved time management, balancing play, study, and screen breaks, creating a positive home environment and reducing stress from internet addiction.

*Keywords: Educational Psychology, Board Game, Family Link, Internet Addiction, Generation Alpha*

---

# Fostering Student Happiness in Learning During the Covid-19 Pandemic: A Phenomenological Study in Elementary School

| Wresti Wrediningsih<sup>1</sup>, Ade Wira Sanjaya<sup>2</sup>

<sup>1</sup>Universitas Gadjah Mada, <sup>2</sup>Sekolah Tumbuh

---

## Abstract

Students' comfort while being at school plays an important role in the learning process. Teachers' representation is required to foster students' well-being. This mini research explores the perspective of the 1st-grade elementary school teachers on student well-being, as well as their experience in promoting it. The data was obtained through an interview with one teacher and analyzed using the interpretative phenomenological analysis (IPA) approach. The results of the analysis showed 4 themes including the principles of student well-being, the ways the teacher encourages students' well-being, and support and challenges for the teacher. This study concludes that the role of teachers is very important in providing a pleasant learning atmosphere for students. There are many ways that teachers can be creative with support from schools and the community.

*Keywords: student well-being, teachers role, phenomenology, schools, distance learning*

---

# Relationship Between School Climate and Teacher Job Satisfaction: A Meta-Analytic Study

| Lisa Dwi Ningtyas  
Universitas Pancasila

---

## Abstract

It is said that a professional teacher is a teacher who performs well. One indicator of a teacher's good performance is that it can be seen from the high level of job satisfaction of the teacher. It is expected that teachers who have high job satisfaction can increase teacher professionalism in their work. Several previous studies said a relationship exists between school climate and teacher job satisfaction. Unlike previous research, this study aims to determine the strength of the relationship or the magnitude of the difference between school climate and job satisfaction through a meta-analysis method with ten highly reputable articles. The results show that school climate positively correlates with teacher job satisfaction. The advice is to obtain information about administration and management in developing a school climate. This is because the school climate can facilitate teacher job satisfaction by increasing teacher professionalism in performance to produce quality students following the goals of Indonesian education stated in the curriculum regarding educational goals.

*Keywords: job satisfaction, school climate, meta-analysis, teachers*

---

# Reading Comprehension on a Laptop, a Cellphone, and Paper: Which One Is Better?

| Andi Tenri Faradiba

Universitas Pancasila

---

## Abstract

The rapid growth of digital technology influences the lifestyles of people, including their reading mediums. Nowadays, there is an array of medium available for people to read, and this can affect how someone understands a reading material. This study aims to examine the effects of reading medium on reading comprehension by implementing a quantitative method with experimental type of research. One hundred and seventeen participants were selected through a non-probability technique, namely accidental sampling. Reading comprehension was measured using multiple-choice questions from three texts, each of which consisted of 10 valid question items. Reading comprehension scores were obtained from correct answers. Reading mediums are divided into three groups; paper, cellphone, and laptop. Results from regression test show that there is no effect of reading medium on reading comprehension ( $p = 0.171 > 0.05$ ). This indicates that reading medium doesn't affect reading comprehension.

*Keywords: reading comprehension, reading medium, late teens*

---

# Track: Environmental and Green Psychology

Supported by :



# **The Role of Social Acceptance as a Mediator Variable in the Influence of Environmental Awareness on Willingness to Pay for Waste to Energy**

| Silverius Y. Soeharso<sup>1</sup>, Seta A. Wicaksana<sup>2</sup>

<sup>1,2</sup>Universitas Pancasila

---

## **Abstract**

This research aims to determine the role of Social Acceptance as a mediator variable on the influence of Environmental Awareness on Willingness to Pay for Waste to Energy. Participants in this research were the general public aged over 16 years. A total of 200 respondents were obtained through convenience sampling techniques. The measuring instruments used in this research are the social acceptance scale (SAS), environmental awareness scale (EAS), and willingness to pay scale (WTPS). The analysis technique used in this research uses the Structural Equation Modeling (SEM) and path analysis tests. The results of this study show that social acceptance of waste to energy cannot play a significant role as a mediator in the relationship between environmental awareness and willingness to pay for waste to energy. Other findings in this research are that environmental awareness has a significant direct effect on social acceptance of waste to energy, environmental awareness directly affects willingness to pay for waste to energy, and social acceptance of waste to energy does not affect willingness to pay for waste to energy. Suggestions for further research could deepen further into what factors can influence the willingness to pay for waste to energy.

*Keywords: environmental awareness, social acceptance, willingness to pay, waste to energy*

---

# Track: Consumer Psychology and Economic Behavior

Supported by :



**F1000Research**  
Open for Science



# Relation Between Repeat Consumption with Anxiety On Emerging Adult Streaming Service Subscribers

| Rama Reksoprodjo  
Universitas Pancasila

---

## Abstract

Anxiety causes many physical signs and individuals who re-consume shows can help them reduce the anxiety because they knew what happen on the show. Technological developments have given rise to various subscription video on demand services, customers will choose their subscription services based on film and series shows which are expected to provide entertainment that reduces the anxiety they feel. The research sample was 73 emerging adults who had subscribed to a streaming service for at least 6 months. Measurement uses the RCS and BAI. Result shows a significance value of 0.003 ( $p < 0.05$ ), a correlation coefficient value of 0.348, this shows that the relationship between repeated consumption and anxiety is positive and significant.

*Keywords: Repeat Consumption, Anxiety, Emerging Adult, Streaming Service*

---

# Experimental Study on the Role of Attractiveness in Enhancing Purchase Intention Moderated by Impulsive Buying Tendencies

| Resekiani Bakar<sup>1</sup>, Sukmawati Ayu Dewi<sup>2</sup>, Nurul Mutmainnah<sup>3</sup>, Lukman<sup>4</sup>

1,2,3,4Universitas Negeri Makassar

---

## Abstract

Previous research has explored the influence of attractiveness on purchase intentions, yet there remains a significant gap in experimental studies within this domain. This investigation seeks to elucidate the impact of attractiveness on purchase intentions, focusing on the moderating role of impulsive buying tendencies—a factor largely overlooked by existing literature. Employing a between-subjects experimental design, this study involves seventy-one female consumers on Instagram. The analysis utilizes Hayes' Process Moderator Model to examine these relationships. Findings indicate that attractiveness significantly enhances the propensity to purchase fashion products, unlike non-attractiveness. Consumers are more inclined to purchase items endorsed by influencers with familiarity, likeability, and similarity. However, impulsive buying tendencies do not appear to intensify the relationship between attractiveness and purchase intentions. Thus, the attractiveness of influencers emerges as a pivotal element in fostering purchase interest on social media, independent of consumers' impulsive buying behaviors. The social influence theory explains that purchase intention can be increased by presenting the influence of attractive models without being moderated by a person's impulsive buying tendency

*Keywords: Attractiveness, Purchase Intention, Impulsive Buying Tendency, Experimental*

---

# Track: Political Psychology and Voters Behavior

Supported by :



# Partisanship and Ideology toward Belief in Political Fake News

| Vinaya Untoro<sup>1</sup>, Agnes Sianipar<sup>2</sup>, Hamdi Muluk<sup>3</sup>

<sup>1</sup>Universitas Pancasila, <sup>2,3</sup>Universitas Indonesia, Universitas Indonesia

---

## Abstract

The rise of social media has exacerbated the spread of fake news. This research explored the psychological factors that shape belief in fake news, specifically focusing on the roles of partisanship and ideology in the Indonesian context. The motivated reasoning theory suggests that detecting fake news that aligns with pre-existing beliefs may become more difficult when individuals are motivated to defend those beliefs. The study began with a preliminary investigation to identify contentious fake news topics on social media across different ideological and partisan groups and to develop suitable measures of partisan attitude for Indonesia. We measured participants' ideological beliefs based on social, economic, and religious dimensions, while partisanship was assessed through their candidate choices in the Republic of Indonesia's presidential election in 2019 and 2024. The main study involved a modeling analysis of these variables through online surveys conducted in two waves: the first in 2022 with 391 respondents and the second following the 2024 Indonesian election, involving 681 respondents. Findings revealed that partisanship was a significant predictor of belief in fake news. Among the three ideological dimensions, only the religious dimension showed a significant indirect effect on belief in fake news, via partisanship. This model held consistently across both study periods in 2022 and 2024. These findings provide evidence and support for motivated reasoning theory, demonstrating that individuals are more likely to believe fake news when it aligns with their pre-existing beliefs. Partisanship, in particular, emerges as a powerful predictor of belief in political fake news.

*Keywords: Fake news, partisanship, ideology, motivated reasoning*

---

# CLOSING SPEECH

---

Assalamualaikum Warrahmatullahi Wabarakatuh

Excellencies, Presenter, Attendees

Ladies and Gentlemen,

I am very honored and delighted to deliver the concluding remarks of 2nd International Conference on Psychology and Interdisciplinary Behavioral Studies (2<sup>nd</sup> ICP-IBS) organized by Faculty of Psychology Universitas Pancasila and Research Synergy Foundation; Supported by: Scholarvein, Reviewer Track, Research Synergy Institute, Research Synergy Press, and F1000 Research. The committee successfully hosted the event, breakout sessions and all presentations were delivered with minimum technical issues. I believe that during this conference, we have all had insightful, interactive, discussions and great chance to share the outcomes of our research.

Throughout this conference, we have had the opportunity to explore deeper in the area of Psychology particularly in Psychology, Behavioural Studies, Digital Transformation, and more related to the topic area which is increasingly relevant in our society. The field of psychology has a profound impact on individuals, families, and communities, contributing to the overall well-being and resilience of society as a whole. The presentation and discussions have shed light on the profound impact to us. I am very glad with the enthusiasm of every presenter and participant that make this conference running well to an end.

I would like to thank all participants, keynote speakers, reviewers, presenters, attendees, and of course session chairs from various countries who have already given their best contribution to this 2<sup>nd</sup> ICP-IBS 2024. Next, my sincere gratitude and thank you, finally, to all the committee members for their hard work. Therefore, let me wish all of our energy, enthusiasm, shared trust and resolve on our way towards achieving a better future for all.

Moreover, Congratulation to the achievement in awarding section for the best paper, the best presentation, and high recognition to all session chairs involved (your feedback is really valuable to all audiences, we are looking forward for future collaboration ahead).

To conclude, thank you for the great contribution and hope that the knowledge and thoughts shared in this conference, new networks, and new friendships will be fruitful for all of us and could increase our professional development in the future.

See you at our upcoming event.

Keep in touch and thank you very much for your attention. Stay safe and healthy.

Best regards,

***Dr. Ayu Dwi Nindyati, M.Si., Psi..***

Head of Organizing Committee of 2<sup>nd</sup> ICP-IBS  
Universitas Pancasila

# Future Events

Supported by :



***2<sup>nd</sup> ICANEAT***

---

2nd International Conference on Artificial Intelligence, Navigation, Engineering, and Aviation Technology

<https://icaneat-apibanyuwangi.com>

Hybrid conference (Banyuwangi, Indonesia) – November 22, 2024

***UINACEB***

---

UIN Annual Conference on Economics and Business

<https://uinaceb.com>

Virtual conference – November 29, 2024

***JICRISD 2024***

---

Jakarta International Conference on Research Innovation and Sustainable Development 2024

<https://jicrisd.com>

Hybrid conference (Jakarta, Indonesia) – December 5, 2024

***5<sup>th</sup> MESS***

---

The 5th International Conference on Management, Education, and Social Science

<https://messconference.com>

Virtual conference - December 10, 2024

***IHSATEC***

---

The International Halal Science and Technology Conference 2024: 17th Halal Science Industry and Business (HASIB)

<https://www.ihsatec.com>

Hybrid conference (Bangkok, Thailand) - December 19 - 20, 2024

***10<sup>th</sup> RESBUS***

---

10<sup>th</sup> International Conference on Interdisciplinary Research on Education, Economic Studies, Business and Social Science (10<sup>th</sup> RESBUS)

<https://www.ihsatec.com>

Virtual Conference – February 18, 2025

***9<sup>th</sup> ESBEM***

---

9<sup>th</sup> International Conference on Entrepreneurship Studies, Business, Economy, and Management Science (9<sup>th</sup> ESBEM)

<https://esbem.com>

Virtual Conference – March 11, 2025

### ***11<sup>th</sup> BEMSS***

---

11<sup>th</sup> International Conference on Business, Economy, Management and Social Studies Towards Sustainable Economy (11<sup>th</sup> BEMSS)

<https://www.bemssconference.com>

Virtual Conference – April 22, 2025

### ***9<sup>th</sup> IBEMS***

---

The 9<sup>th</sup> International Conference on Interdisciplinary Business, Economy, Management, and Social Studies (9<sup>th</sup> IBEMS)

<https://www.ibemsconference.com>

Hybrid conference (Perth, Australia) – July 8-9, 2025

### ***10<sup>th</sup> MASOS***

---

10th International Conference on Management Studies and Social Science (10th MASOS)

<https://www.masosconference.com>

Virtual Conference – August 12, 2025





Supported by :

